

DAIHAN-brand® Digital Precise Water Bath, "WB", 6-/11-/22- Lit., up to 100°C, ±0.1°C, CE-Certi. with Digital Fuzzy Control System, 1×Stainless steel Flat Lid, and Back Light LCD, with Certi. & Traceability
정밀 항온수조, 디지털 퍼지 제어 시스템, Stainless steel Flat Lid 포함



Digital Precise Water Bath, 11Lit. "WB-11"

- with Certificate & Traceability : Controlled by Serial Number, Certificate, Delivery-information, and Traceable Data Base System
- Digital Fuzzy Control System Implementing Superior Temperature Accuracy
- Patented Jog-Shuttle Control System and Digital LCD with Back-Light Function
- PL(Product Liability) Insurance

- * User's Self-Compensation Function to Control Difference between Real Temperature and Indicated Temperature (±10.0°C).
- * 304 Stainless steel Bath & Lid for Superior Durability & High Thermal Efficiency/Constant.
- * Digital Timer Function(99hr 59min) : 'Delay Time' and 'Operation Time' can be Controlled.
- * Storage Function for the Set Values of Temperature and Timer.
- * Locking Mode Supported for Experimental Safety (Input to Jog-Shuttle can be Disabled).

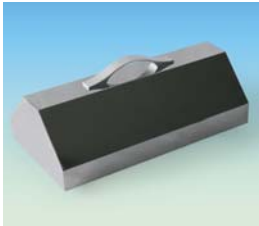
Specification

Capacity & Models	6 Lit. "WB-6"	11 Lit. "WB-11"	22 Lit. "WB-22"
Temp. Range & Accuracy	Ambient +5°C ~ 100°C, ±0.1°C		
Temp. Resolution	0.1°C - Display, 0.1°C - Control		
Temp. Uniformity & Probe	±1.0°C, PT100		
Heating Power	800 W	1 kW	2 kW
Timer & Alarm	99hr 59min (Delay & Continuous run), Error status & Timer-end		
Display	Digital LCD with Back-Light Function		
Controller	Digital Fuzzy Controller with Jog - Shuttle Switch (Turn + Push)		
Safety Circuit	Over-Temp. / -Current protection, Sensor Error Detection		
Material	Stainless steel (# 304)-Internal, Powder Coated steel-External		
Lid	included Stainless steel Flat Lid, Optional Dome Lid		
Drain Valve	None		Mounted(φ9.5~11mm)
Dimension (w × d × h)	Effective Space	300 × 155 × h110mm	302 × 240 × h110mm
	Internal	300 × 155 × h150mm	302 × 240 × h150mm
	External	325 × 180 × h260mm	325 × 265 × h260mm
Packing Size (mm) and Gross Weight (kg)	350 × 210 × h310mm, 8 kg	350 × 300 × h310mm, 10 kg	570 × 360 × h310mm, 14 kg
	Power Supply* 1 Phase, AC 120 V, 60 Hz or AC 230 V, 50 / 60 Hz		

* Other Specifications are available upon Customer's Request.



(1) Flat Lid, Stainless steel (Included)



(2) Dome Lid, Stainless steel



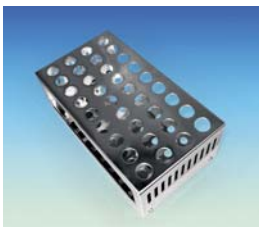
(3) "BFC106"
Lid with Concentric Ring Cover Sets for 6Lit.



(4) "BFC111"
Lid with Concentric Ring Cover Sets for 11Lit.



(5) "BFC122"
Lid with Concentric Ring Cover Sets for 22Lit. Bath



(6) Test Tube Rack, Stainless steel

Ordering Information

	Ea. Price, ₩
DH.WB000106 Water Bath, Digital, 230V, 6 Lit., "WB-6"	427,600
DH.WB000111 , 11 Lit., "WB-11"	456,440
DH.WB000122 , 22 Lit., "WB-22"	527,780
DH.WB000206 Water Bath, Digital, 120V, 6 Lit., "WB-6"	427,600
DH.WB000211 , 11 Lit., "WB-11"	456,440
DH.WB000222 , 22 Lit., "WB-22"	527,780

Spare Flat Lids, Stainless steel

	Ea. Price, ₩
DH.WB010106 (1) Flat Lid, for 6 Lit., w325 × d176mm, "BF106"	20,840
DH.WB010111 , for 11 Lit., w325 × d265mm, "BF111"	22,640
DH.WB010122 , for 22 Lit., w530 × d325mm, "BF122"	29,940

Optional Lids and Tube Rack, Stainless steel

	Ea. Price, ₩
DH.WB010206 (2) Dome Lid, for 6 Lit., 324 × 176 × h100mm, "BD206"	132,430
DH.WB010211 , for 11 Lit., 324 × 263 × h100mm, "BD211"	146,430
DH.WB010222 , for 22 Lit., 533 × 328 × h100mm, "BD222"	166,830
DH.WB030106 (3) Lid with 2 × Concentric Ring Cover Sets, for 6 Lit., Stainless steel, 330 × 182 × h20mm, "BFC106"	64,150
DH.WB030111 (4) Lid with 2 × Concentric Ring Cover Sets, for 11 Lit., Stainless steel, 329 × 269 × h20mm, "BFC111"	78,470
DH.WB030122 (5) Lid with 6 × Concentric Ring Cover Sets, for 22 Lit., Stainless steel, 539 × 334 × h20mm, "BFC122"	137,890
DH.WB020106 (6) Tube Rack, for 6 Lit., 36Hole × φ 17mm, "BTH106", Stainless steel, 220 × 125 × h78.5mm	35,830
DH.WB020206 (6) Tube Rack, for 6 Lit., 15Hole × φ 32mm, "BTH206", Stainless steel, 220 × 125 × h78.5mm	35,830
DH.WB020111 (6) Tube Rack, for 11 Lit., 63Hole × φ 17mm, "BTH111", Stainless steel, 220 × 205 × h78.5mm	42,780
DH.WB020211 (6) Tube Rack, for 11 Lit., 25Hole × φ 32mm, "BTH211", Stainless steel, 220 × 205 × h78.5mm	42,780

Validation (IQ, OQ) Service

	Ea. Price, ₩
DH.WB040106 Validation Service(IQ, OQ), "BV106", for "WB-6"	문의요함
DH.WB040111 , "BV111", for "WB-11"	문의요함
DH.WB040122 , "BV122", for "WB-22"	문의요함