

## -40°C Biomedical Freezer (Double Doors Type)

## -40°C Biomedical Freezer (Double Doors Type)

Suitable for the storage of plasma, biological material, reagents and other essential items. Used within hospitals, disease prevention, academia and commercial laboratories.



DW-40L418D/528D

### Scope of Application:



#### HC Energy-saving

High efficiency hydrocarbon compressor and refrigeration technology for a lower energy consumption



#### Superior Uniformity

With the optimized system design, the temperature uniformity of the characteristic point is  $\pm 3^{\circ}\text{C}$ , and the uniformity of the whole temperature zone is controlled within  $\pm 3^{\circ}\text{C}$



#### Environmental Protection

Hydrocarbon refrigerant, LBA foam polyurethane insulation layer

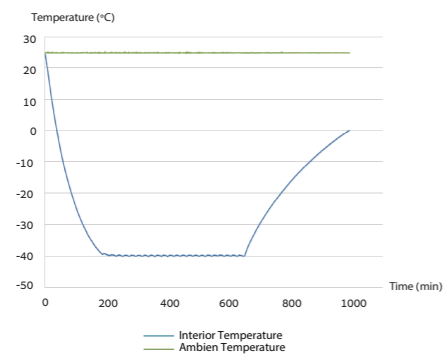


#### Adjustable Shelves

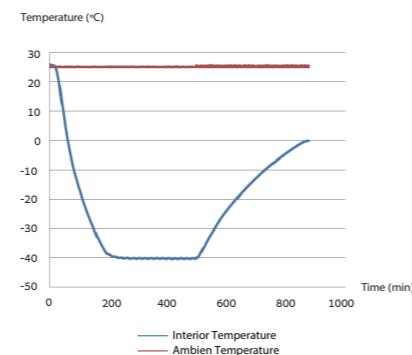
Built-in evaporator and adjustable shelves provides large available interior space. Users can store items of different sizes as needed

### Temperature Curve

DW-40L418D Typical Performance Characteristics at 25°C Ambient



DW-40L528D Typical Performance Characteristics at 25°C Ambient



### Specifications

Model	DW-40L348	DW-40L508	DW-40L418D	DW-40L528D		
Technical Data	Cabinet Type	Upright, Double Door	Upright, Double Door	Upright	Upright	
	Climate Class	SN N	SN N	SN N	SN N	
	Cooling Type	Direct Cooling	Direct Cooling	Direct Cooling	Direct Cooling	
	Defrost Mode	Manual	Manual	Manual	Manual	
	Refrigerant	HC	HC	CFC-Free	HC	
	Sound Level (dB(A))	41	41	45	41.7	45
Performance	Cooling Performance (°C)	-40	-40	-40	-40	
	Temperature Range (°C)	-20~-40	-20~-40	-20~-40	-20~-40	
Control	Controller	Microprocessor	Microprocessor	Microprocessor	Microprocessor	
	Display	LED	LED	LED	LED	
Electrical Data	Power Supply (V/Hz)	220~240/50	220~240/50	208~230/60	220~240/50	220~240/50
	Power (W)	280	285	510	640	630
	Electrical Current (A)	2.9	2.9	5.6	4.2	5.7
	Power Consumption (kWh/24h)	3.3	3.8	6.6	/	/
Construction	Capacity (L/Cu.Ft)	348/12.3	490/17.3	418/14.8	531/18.8	
	Net/Gross Weight (approx)	kg	137/145	164/200	145/165	180/205
		lbs	302.0/320.0	361.6/440.9	319.7/363.8	396.8/451.9
	Interior Dimensions (W*D*H)	mm	535*610*1228	685*610*1228	554*620*1230	704*620*1230
		in	21.1*24.0*48.3	27.0*24.0*48.3	21.8*24.4*48.4	27.7*24.4*48.4
	Exterior Dimensions (W*D*H)	mm	790*845*1860	940*845*1860	790*845*1878	940*845*1878
		in	31.1*33.3*73.2	37.0*33.3*73.2	31.1*33.3*73.9	37.0*33.3*73.9
	Packing Dimensions (W*D*H)	mm	852*927*2044	997*927*2044	852*927*2044	997*927*2044
in		33.5*36.5*80.5	39.3*36.5*80.5	33.5*36.5*80.5	39.3*36.5*80.5	
Loading Quantities	Container Load (20'/40'/40'H)	12/28/28	12/24/24	12/28/28	12/24/24	
Alarms	High/Low Temperature	Y	Y	Y	Y	
	Remote Alarm	Y	Y	Y	Y	
	Power Failure	Y	Y	Y	Y	
	Sensor Error	Y	Y	Y	Y	
	Low Battery	Y	Y	Y	Y	
	High Ambient Temperature	Y	Y	Y	Y	
	Door Ajar	/	/	Y	Y	
	Caster	Y	Y	Y	Y	
Accessories	Foot	Y	Y	Y	Y	
	Porthole	Y	Y	Y	Y	
	Drawers/Inner Doors	12/-	10/-	Optional/-	Optional/-	
	USB Interface	Optional	Optional	Optional	Optional	
	RS485	Optional	Optional	Optional	Optional	
	Temperature Recorder	Optional	Optional	Optional	Optional	
	Certification	CE	Y	Y	Y	Y

\*Haier Biomedical reserves the right to change products and specifications without prior notice.